



Ehrman Road Elementary School

2019-2020 180,000 GSF

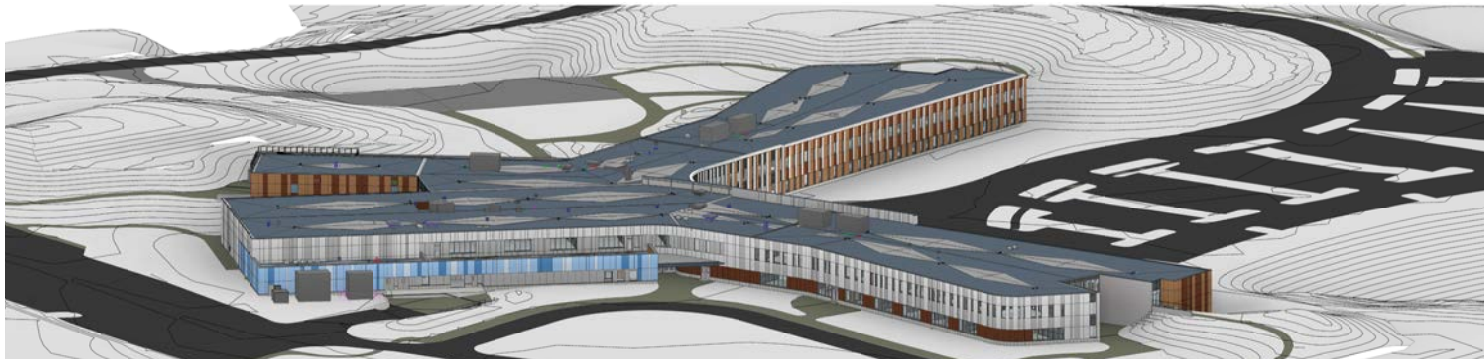
Greenfield elementary school with ICC-500 compliant storm shelter and a diverse range of collaboration spaces and group room typologies to leverage. The expansive glazing creates a strong connection to the hilly site while the colorful phenolic panel rain screen provides identity to the lower and upper grades. A series of educational exhibits are introduced around the school in partnership with a local children's museum.

Project Responsibilities

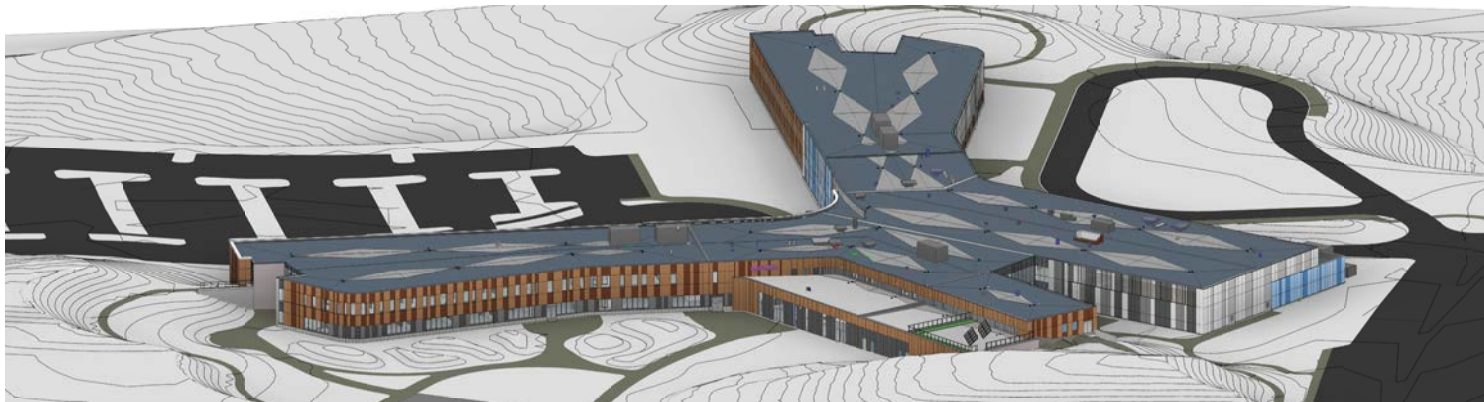
- Lead team to simplify and detail the complex exterior design and material set
- Eliminated nearly \$100,000 by proposing battery back-up in lieu of generator
- Lead extensive engineering coordination through Contract Document phase
- Saved nearly \$300,000 by simplifying the ceiling and fire protection design



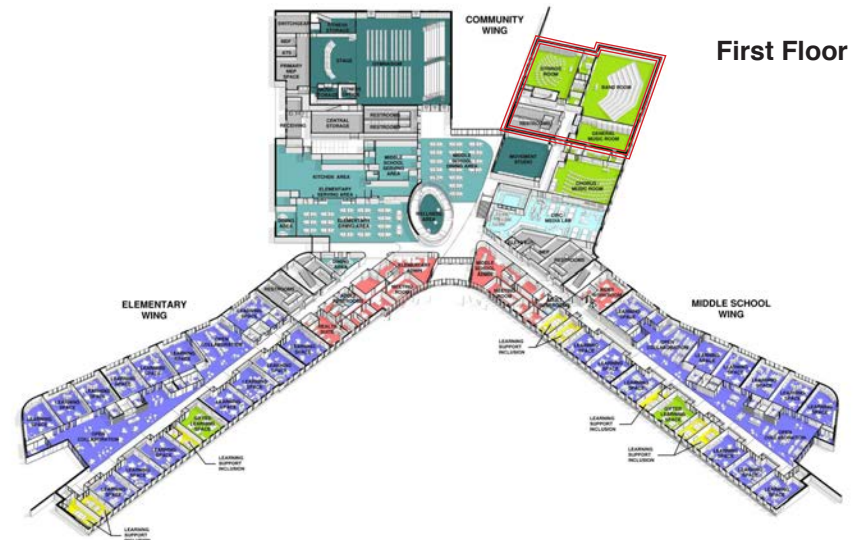
Exterior rendering of lower classroom wing with kindergarten terrace clad in blue panels beyond



Aerial perspective showing kindergarten terrace and lower school classroom wing



Aerial perspective showing upper school classroom wing and terraced storm shelter



First and second level floor plans with storm shelter indicated in red



Shared learning space with educational exhibits designed in partnership with local children's museum



Cafeteria connected to main circulation and school entrance to serve as an activity hub



Resource area of Circ space, the combination library / maker space



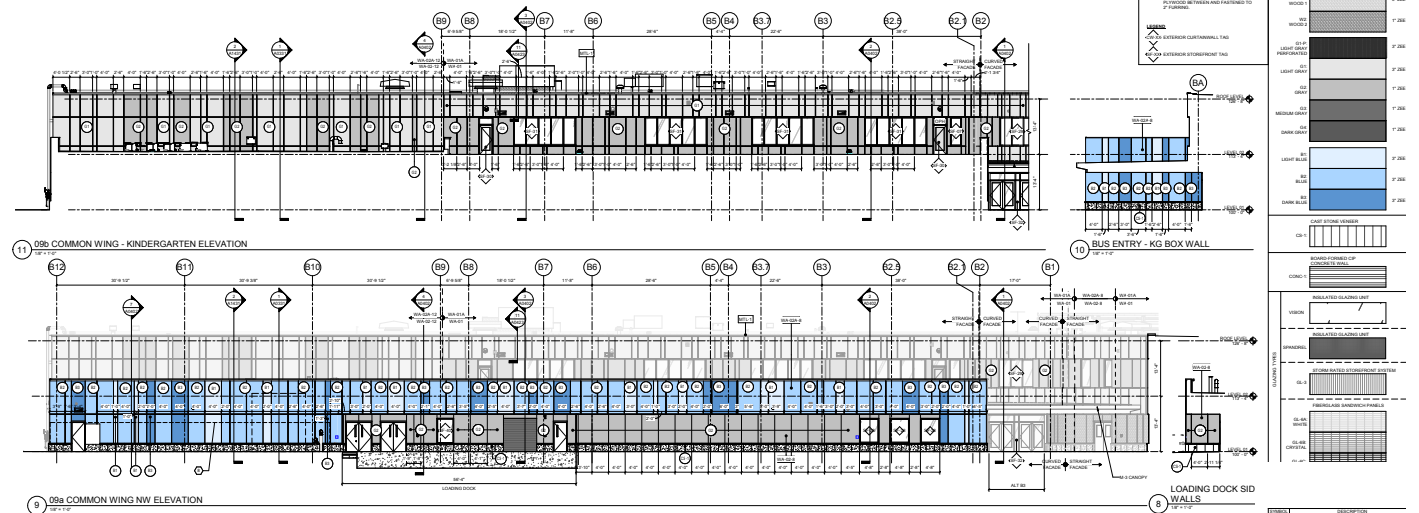
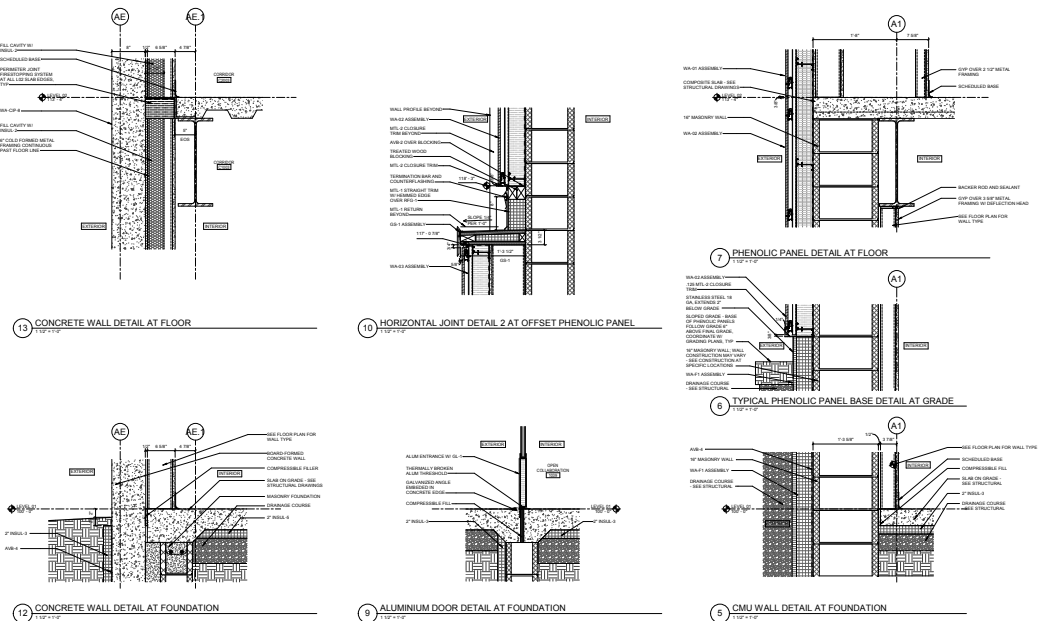
View from corridor into classroom



Shared learning space for kindergarten classrooms



Spiral ramp featured at entry to promote active lifestyle and play



Partial exterior elevation and a selection of exterior details from the Contract Documents

