



Liberty Junior High Addition

2008-2009 54,000 GSF + 23,000 NSF

Middle school classroom addition and extensive renovation of the existing junior high. The new addition is served by a geothermal HVAC system. Through analyzing and increasing utilization, flexible collaboration spaces and new electives were introduced into the program while maximizing use of the limited available site. Particular attention was paid to harmonize the experience between the new and existing parts of the school.

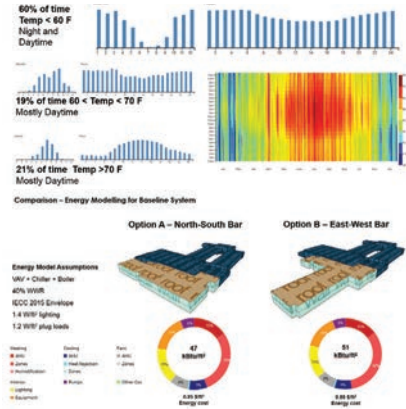
Project Responsibilities

- Managed all phases from Concept Design through Contract Administration
- Developed program and site layout strategy for multi-phase addition / renovation
- Delivered comprehensive FF&E for project with 25% lower budget than typical
- Identified key opportunities to leverage existing spaces for new programs



Final Floor Plans
Classrooms in yellow, Collaboration spaces in blue, Workrooms in red, Specialty in green

Rendered perspective with interior finish colors. Outdoor classrooms with concrete benches surround the school



Selected site layout with fitness area north of existing facility

Site planning analysis of student / visitor entrance flow, parking requirements and energy usage.

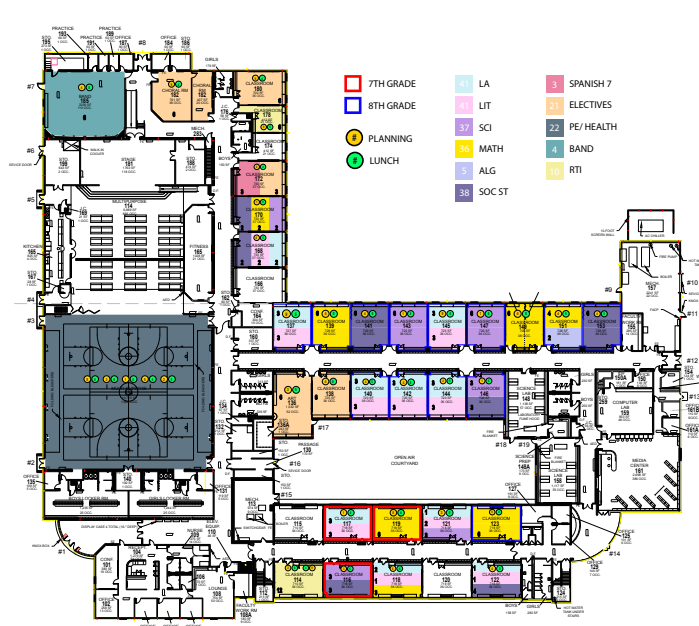
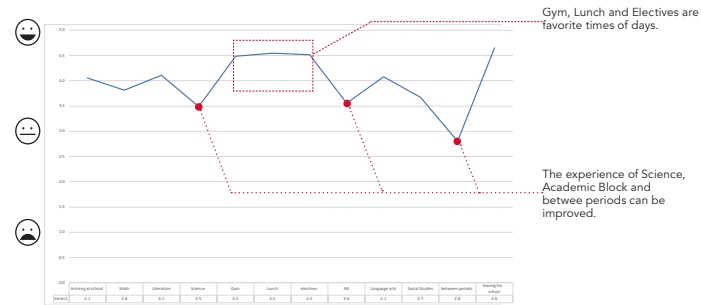
How do you feel throughout the day?

Please help us understand what you like the most and the least about your school day. Whether it is a favorite class, lunch or in between periods, please take a moment to reflect on your experience. This survey is completely anonymous.

Please circle the two that apply. (7th Grade) (8th Grade) (Student) / (Teacher)

(Please fill in your scheduling)	Arriving at School	Period 1	Period 2	Period 3	Period 4	Period 5	Period 6	Academic Block 7	Period 8	Period 9	Between Periods	Leaving from School
	Car/walk	Reading	L.A.	S.S.	Lunch	Math	Gym	A.B.	Computers	Science		Car/walk
😊	☒			☑		☑	☑					☑
😊		☑							☑			
😐			☑		☑			☑			☑	
😞	☑									☑		
😡												

Additional Comments:
Lunch sometimes is a little uncomfortable.



Current Status

- Total Equivalent Rooms Required: **27.2**
- Existing Classroom Count: **35 (incl. Labs)**

Current Rooms Required at 78%

- Total Rooms: **32.4**
- Reduction in Room Count: **-2.6**

Projected Rooms Required at 78%

- Total Rooms: **50.2**
- Additional Rooms Required: **15.2**

Projected Rooms Required at 89%

- Total Rooms: **43.9**
- Additional Rooms Required: **8.9**

MATH	4.0				
LIT	3.9				
LANG	4.0				
S.S.	4.1				
SCIENCE	3.9	LAB	LAB		
ACKBLK					

MATH	5.1				
LIT	5.0				
LANG	5.1				
S.S.				5.3	
SCIENCE	3.0	LAB	LAB		
ACKBLK					6.9

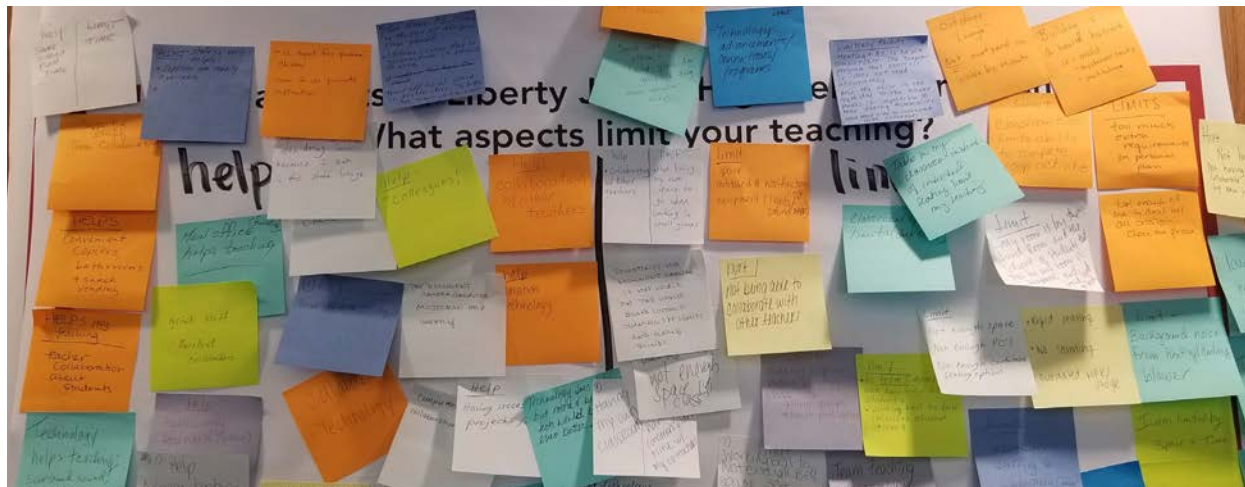
MATH	8.0				
LIT	7.6				
LANG	7.8				
S.S.	8.1				
SCIENCE	3.6	LAB	LAB	LAB	LAB
ACKBLK					11

MATH	7.0				
LIT	6.7				
LANG	6.9				
S.S.	7.0				
SCIENCE	2.7	LAB	LAB	LAB	LAB
ACKBLK					9.6

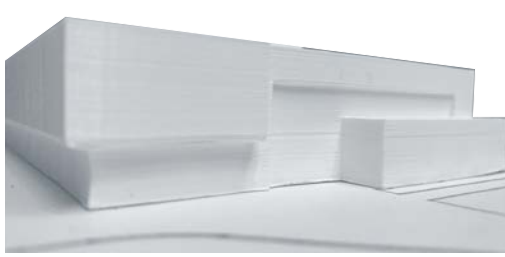
Survey presented to students to understand their experience

Diagram of school schedule to determine current utilization

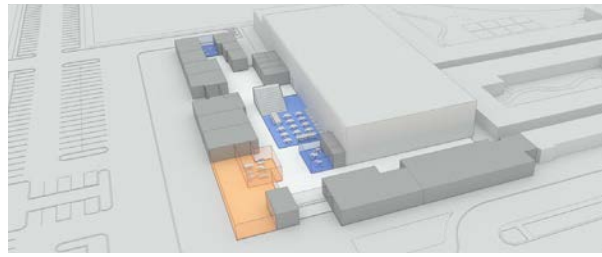
Diagram to visualize required number of classrooms based on utilization



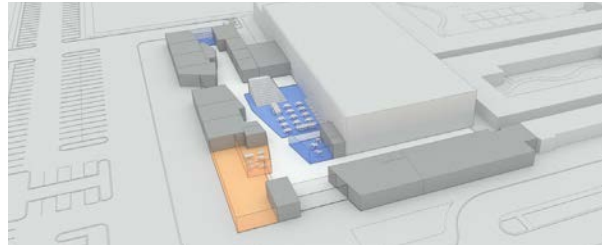
User engagement workshops were conducted with students, leaders, teachers parents, community members and district administrators. This lead to targeted renovations which expanded programs for students.



Orthogonal Scheme model



Angular Scheme model



Curved Scheme model



Material and fenestration studies at main entrance



Material and fenestration studies at west facade



West entrance, used for student bus access and after-hours plays, sports and other events



Structural steel at 18' cantilever at second level



Proposed acoustic feature in multipurpose space



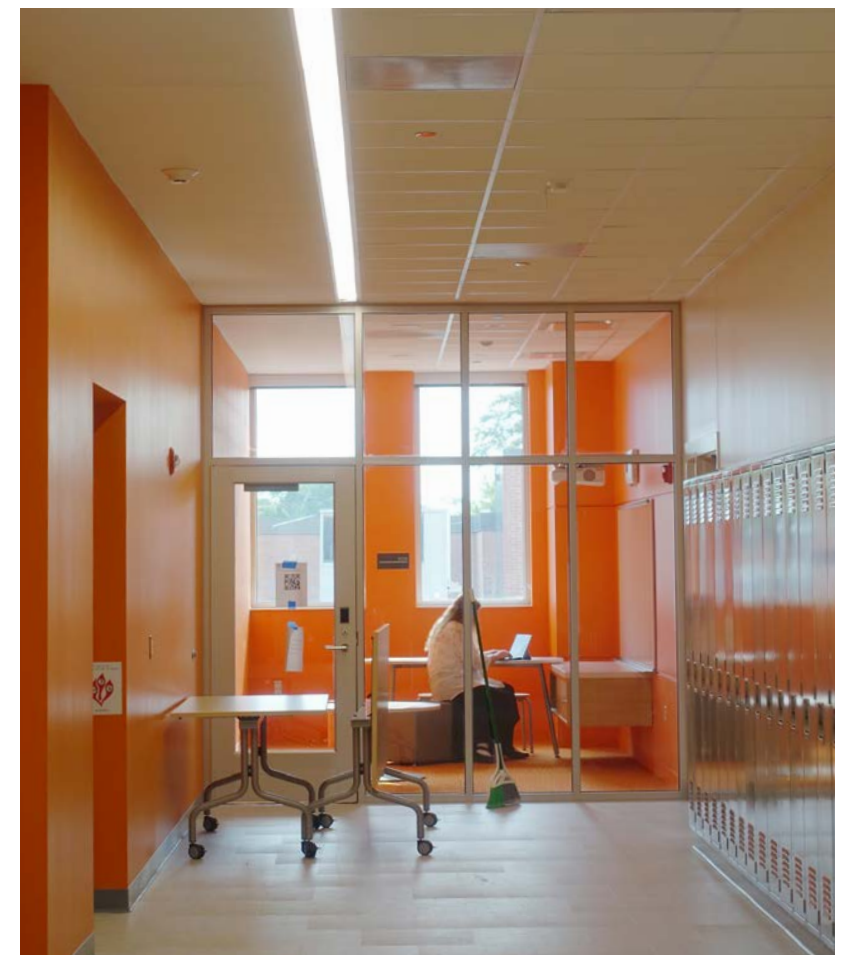
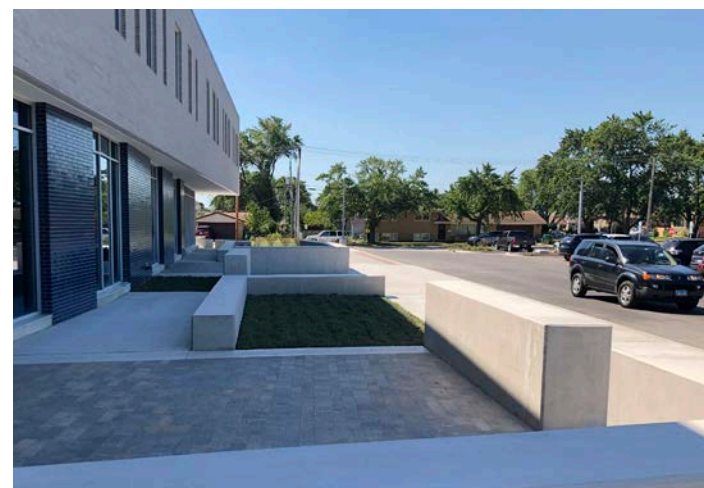
The heart of the addition is the central multipurpose space, with corridor weaving along classrooms and collaboration spaces



Larger collaboration spaces are paired with small group rooms



The west facade hosts a series of outdoor classrooms and seating areas, passively shaded by the building through the entire school day



Colorful small group rooms are located throughout the school



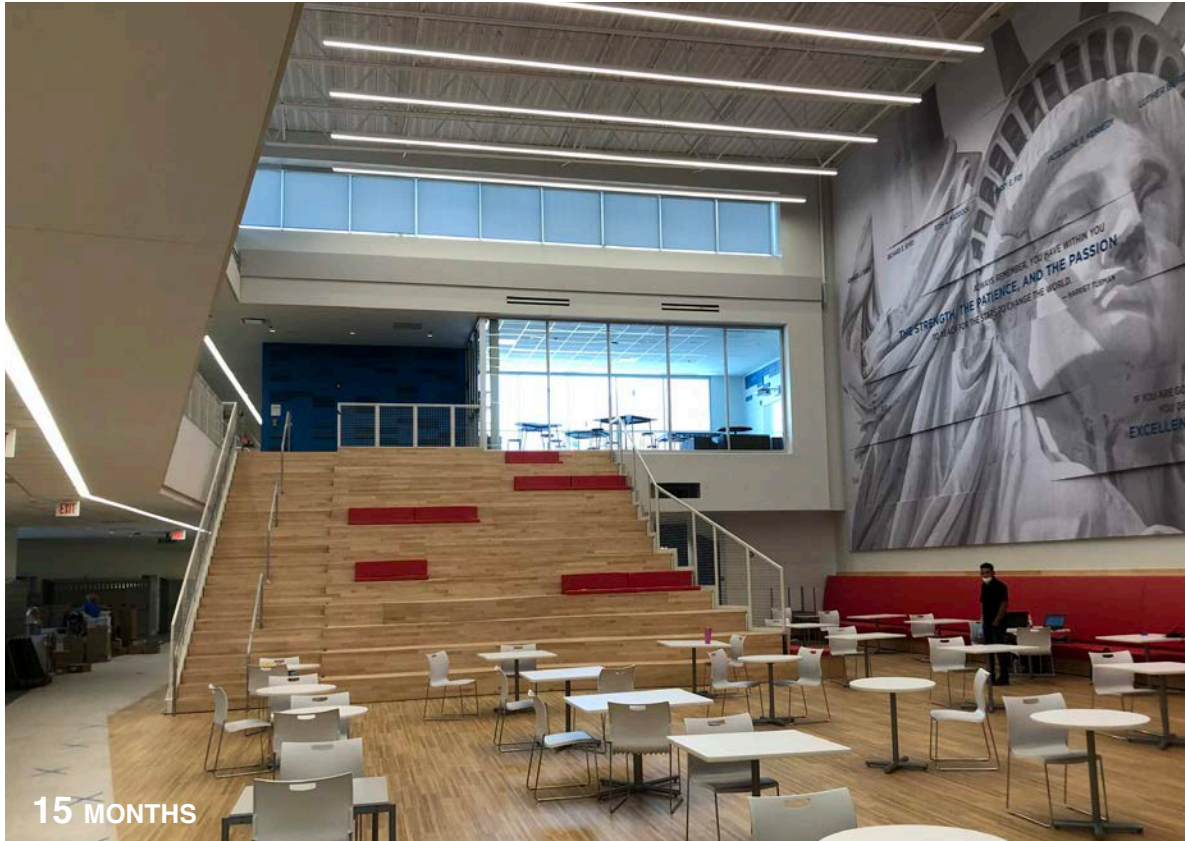
Expansive collaboration spaces were created by combining existing classrooms



Existing corridors were updated to unify the school

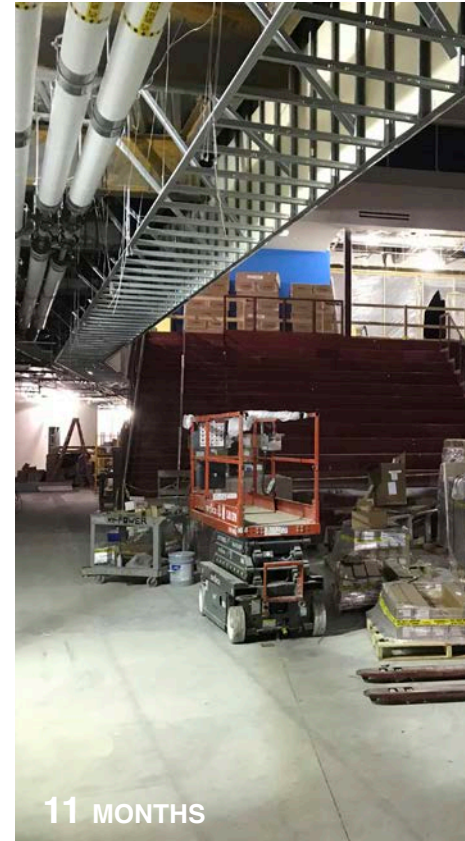


Small group rooms provide views from corridors



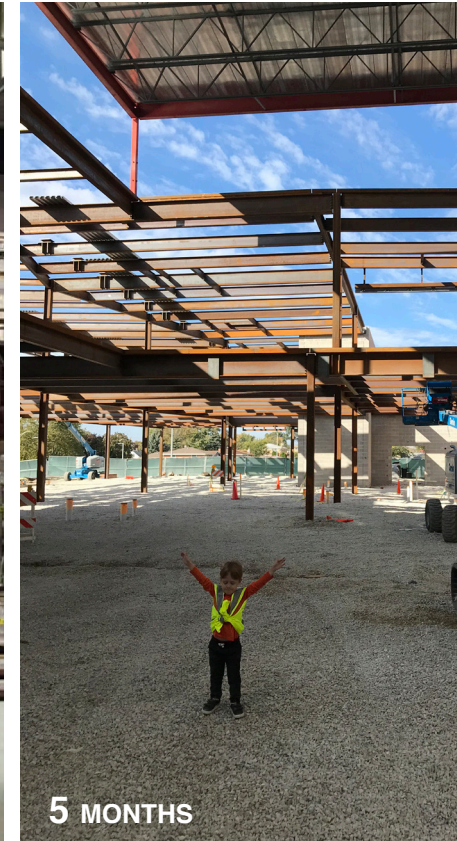
15 MONTHS

The completed Multipurpose Space for flexible use by adjacent classrooms, lunch and presentations



11 MONTHS

A similar view of the Multipurpose Space in various stages of construction



5 MONTHS



1 MONTH