



Luther Burbank School

2016-2018

84,000 GSF

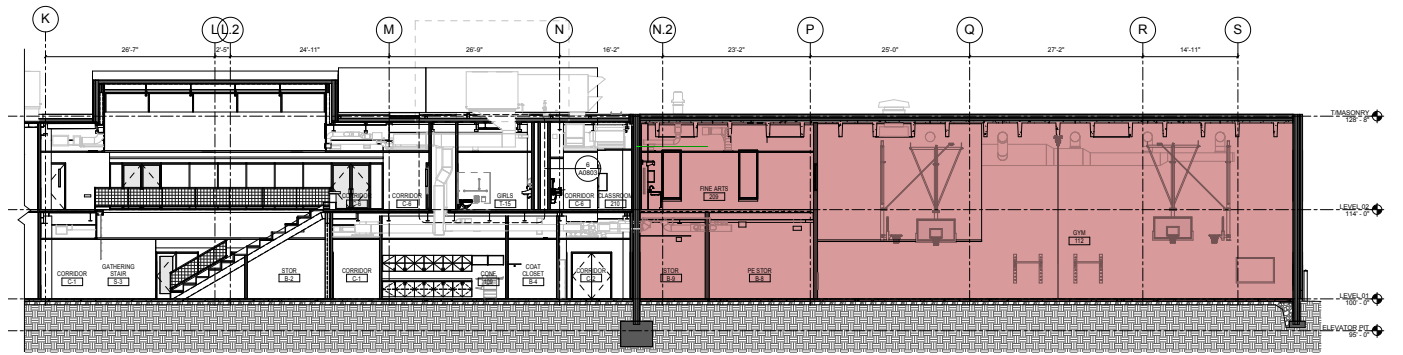
Eponymous \$25.5m replacement school designed with 3-strand classroom groups connected to a shared learning space. The shared learning spaces can be used as a means to bring classes together or break a class into smaller groups, providing maximum flexibility. Creating a direct connection to nature was a key goal of the design by providing access to outdoor classrooms set within the rain garden.

Project Responsibilities

- Design, detailing and construction of complex ICC-500 compliant storm shelter
- Concurrent Project Architect / Manager role for interdisciplinary internal team
- Facilitated district's shift to flexible furniture, including post-occupancy surveys
- Detailed and coordinated design of feature walls and millwork installations



Music classroom within storm shelter; complex protection shrouds concealed above ceiling



North-south longitudinal section with gathering stair at left and storm shelter outlined in red



Erecting storm shelter envelope



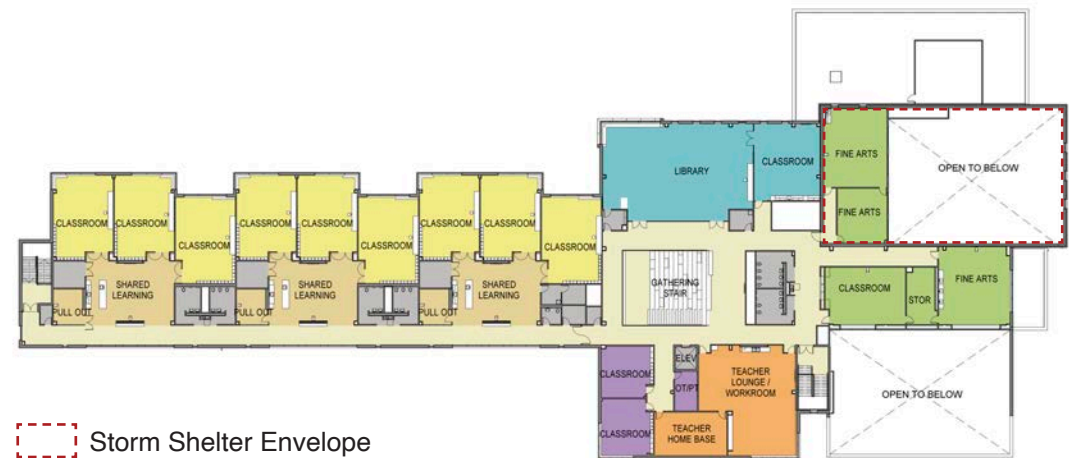
Steel shrouds at penetrations



Music room with steel protection visible



Ground floor plan with classrooms, main office, gym, cafeteria and kindergarten classrooms



Storm Shelter Envelope

Second floor plan with classrooms, Library, music and teacher workroom



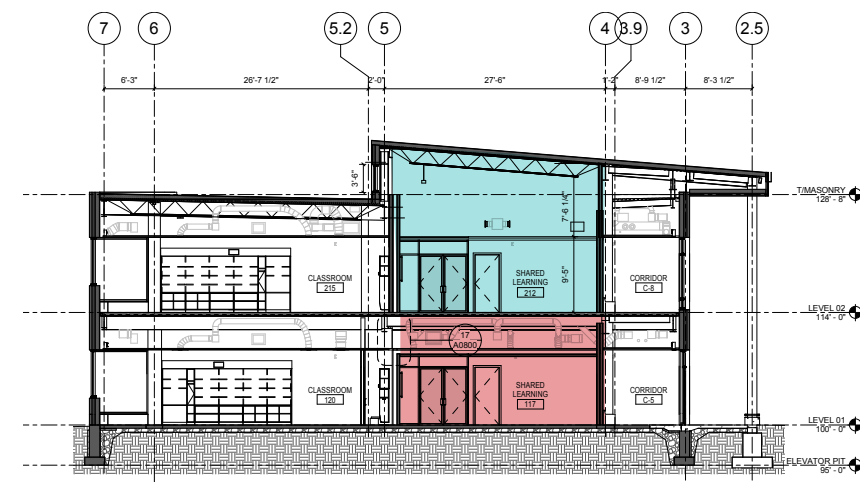
Shared learning space connecting classrooms on the second level



Main corridor with direct connections between shared learning and outdoor classrooms



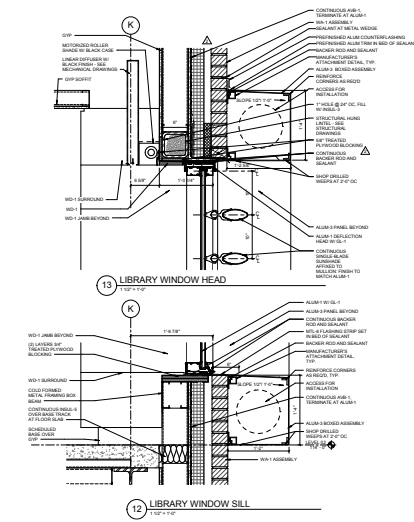
Shared learning provides flexibility and break out spaces with direct visual connection



Cross section through classroom wing, shared learning areas shaded



Casual seating areas and classroom within library for instruction



Exterior detail at library window

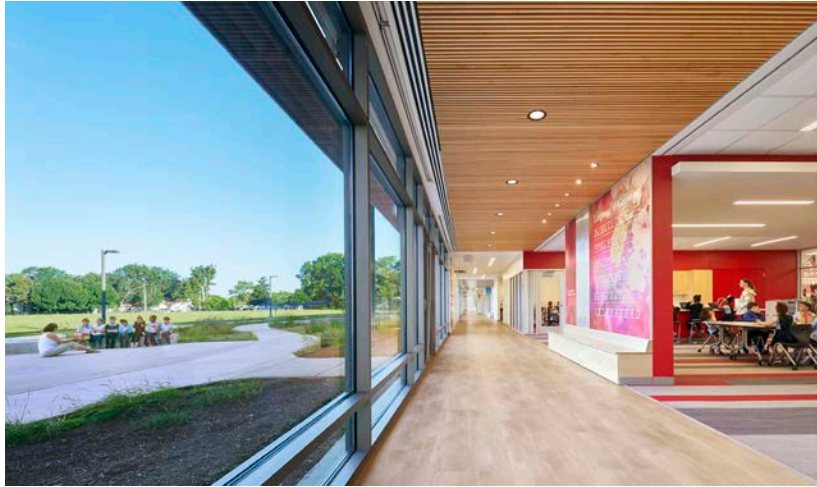


Library entrance beyond gathering stair



Design phase library visualization and photograph of final condition.





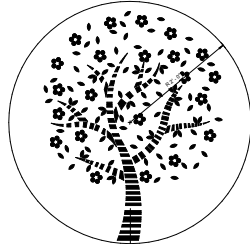
Typical classroom with connection to shared learning and rain garden



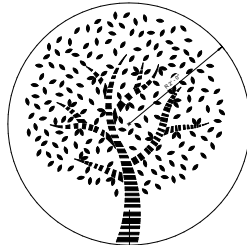
Typical classroom with connection to shared learning and rain garden



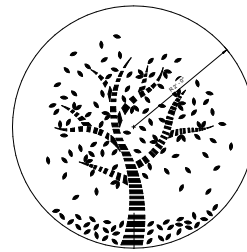
Construction photo showing new school with existing school beyond



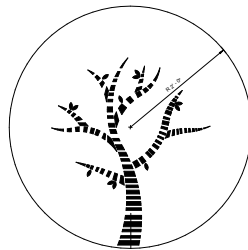
Spring - Kindergarten



Summer - First Grade



Fall - Second Grade



Winter - Third Grade

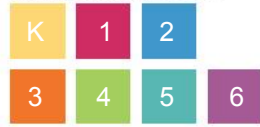
Outdoor Classroom Medallion Designs



Meandering path with bridges winding through the rain garden to connect outdoor classrooms



PRELIMINARY COLOR & TYPOGRAPHIC STUDIES



PRIMARY TYPEFACE
 Abba Sanswood, PageW
 abcdefghijklmnopqrstuvwxyz
 ABCDEFGHIJKLMNOPQRSTUVWXYZ
 1234567890

SECONDARY TYPEFACES
 Abba Sanswood, 081
 abcdefghijklmnopqrstuvwxyz
 ABCDEFGHIJKLMNOPQRSTUVWXYZ
 1234567890
 Helen Hess, Book
 ABCDEFGHIJKLMNOPQRSTUVWXYZ
 1234567890

KINDERGARDEN



FIRST GRADE



SECOND GRADE



THIRD GRADE



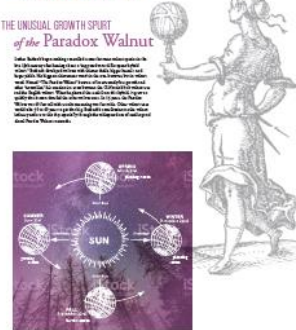
FOURTH GRADE



FIFTH GRADE



SIXTH GRADE



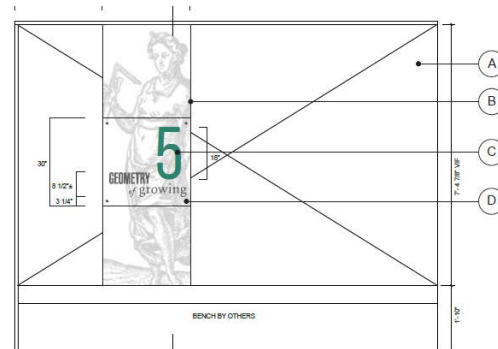
Graphics for shared learning displays illustrating connections to the seven classic arts



Reclaimed limestone carvings installed over millwork bench and educational display at school entry



Original Luther Burbank School with Limestone Carvings above the entry, later reclaimed



Line drawing of grade level feature wall



Rendering of main entry feature wall presented during design phase